

## APPLICATION NOTE

# Methanol & Menthol Analysis

## 1. Analytical Condition

### YL 6500 Series

Oven : 40°C(5min) -> 20°C/min -> 180°C(8min)

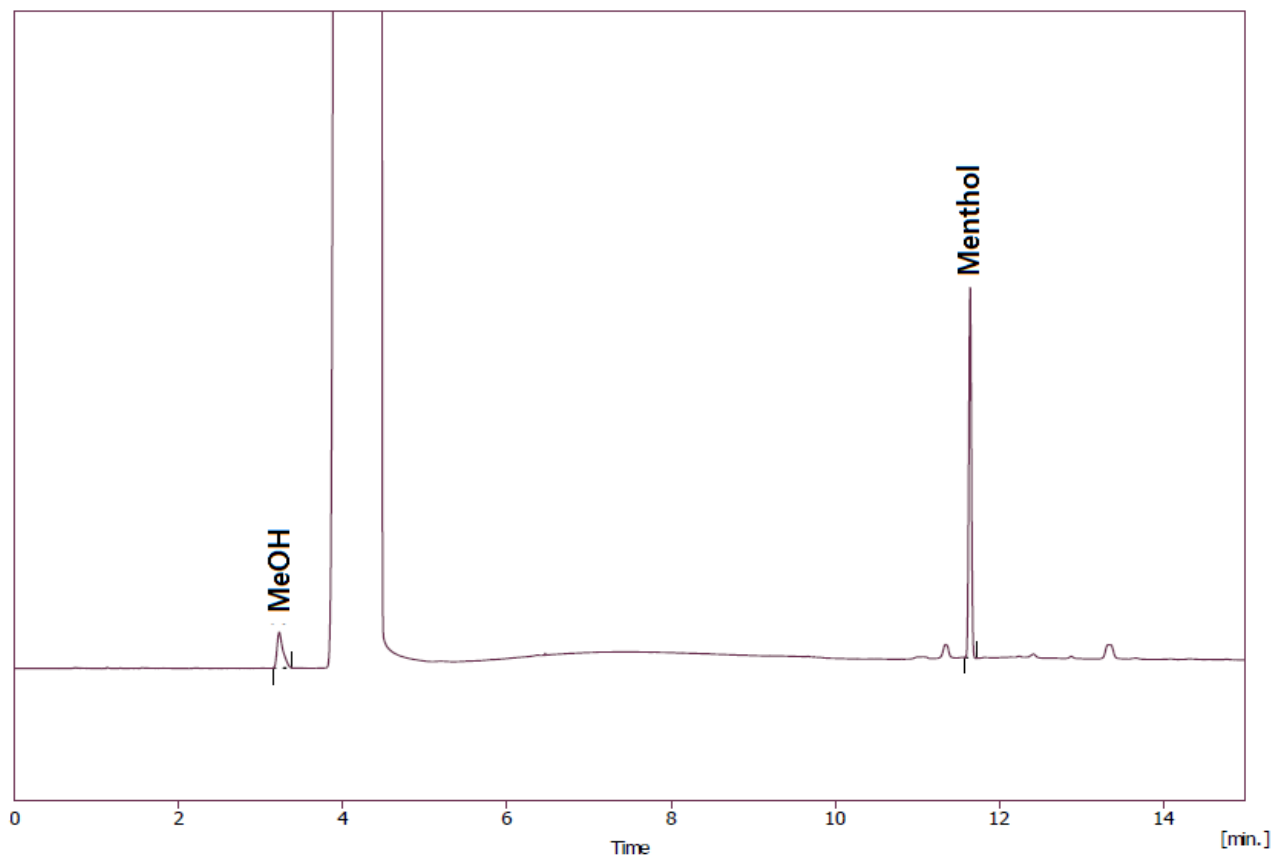
Column : GL IC Wax (30m\*0.53mm\*1.0um)

Carrier gas : N<sub>2</sub>, 7ml/min (SR 10:1)

Injector : Capillary 250°C

Detector : FID 250°C

## 2. Chromatogram



YOUNG LIN INSTRUMENT

Young Lin Bldg., 899-6 Hogye-dong, Anyang, 431-836, Korea  
Homepage : [www.younglin.com](http://www.younglin.com) E-mail : [export@younglin.com](mailto:export@younglin.com)