

Impurity(Solvent Purity) content analysis in Solvent

1. Analytical condition

YL 6500 Series

Oven : 70°C (for 1 min)- temp-programed 20 °C/min-250 °C(for 1 min)

Column : Ultra-2(25m*0.32mm*0.5um)

Carrier gas : He, 2.0 ml/min (Split ratio 40:1)

Injector : Capillary 230°C

Detector : FID 250°C

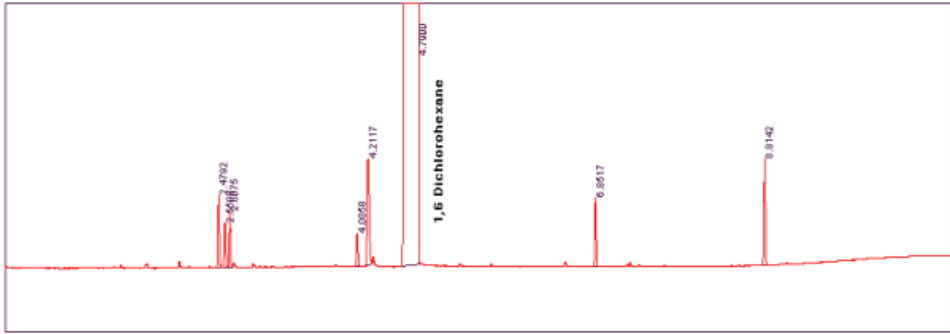
Sample : 1,6-Dichlorohexane STD & Sample

Injection Volume : 0.5ul (Liquid)



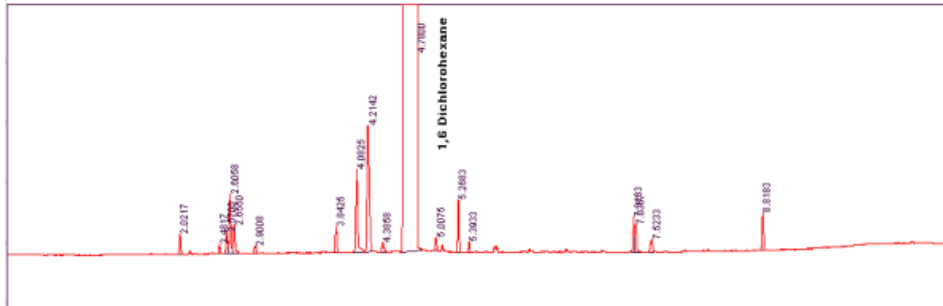
2. Chromatogram

1,6 Dichlorohexane Standard



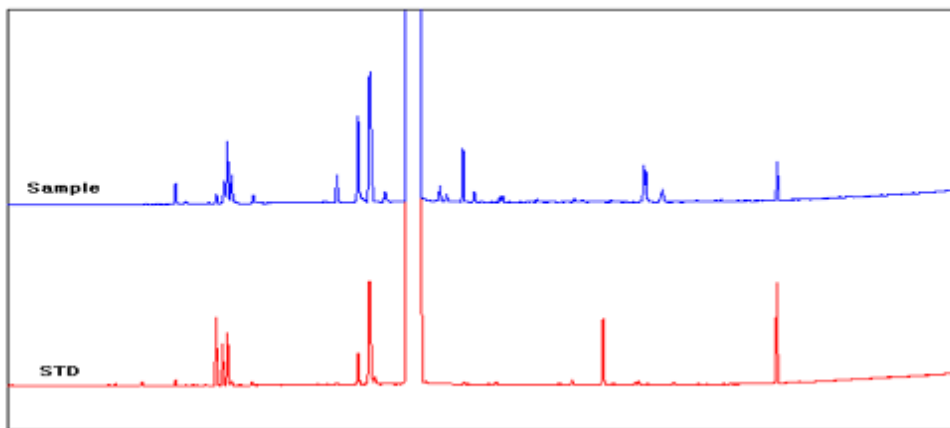
Sample

Time (min)



Time (min)

1,6 Dichlorohexane STD & Sample



(min)

