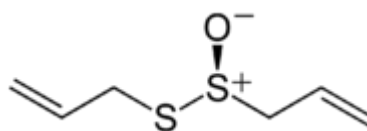


Allicin Analysis in Garlic



1. Analytical Condition

YL9100 HPLC

Mobile Phase : ACN : Water = 30 : 70

Flow Rate : 1.2ml/min

Column Oven : 25°C

Detector : UV/Vis 195nm

Column : C18(4.6*250mm, 5um)

Injection Volume : 20ul (extract 0.456 g/ 10 ml water)

2. Chromatogram

