

# Aminophenols, phenylenediamines Analysis

## 1. Analytical Condition

### YL9100 HPLC

Mobile Phase : MeOH : Water = 3 : 7 (pH=5.3)

Flow Rate : 1.0ml/min

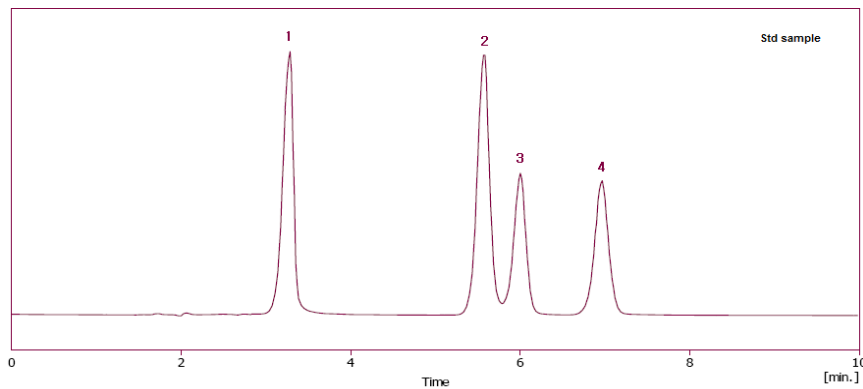
Column Oven : 35°C

Detector : UV/Vis 254nm

Column : Phenyl (4.6\*150mm, 5um)

Injection Volume : 20ul

## 2. Chromatogram



1. p-phenylenediamine
2. m-phenylenediamine
3. Aminophenol
4. Resorcinol

