

Arbutin Analysis

1. Analytical Condition

YL 9100 Series HPLC

Mobile Phase : Water:Ethanol=95:5 (1% Acetic acid)

Flow Rate : 1.0ml/min

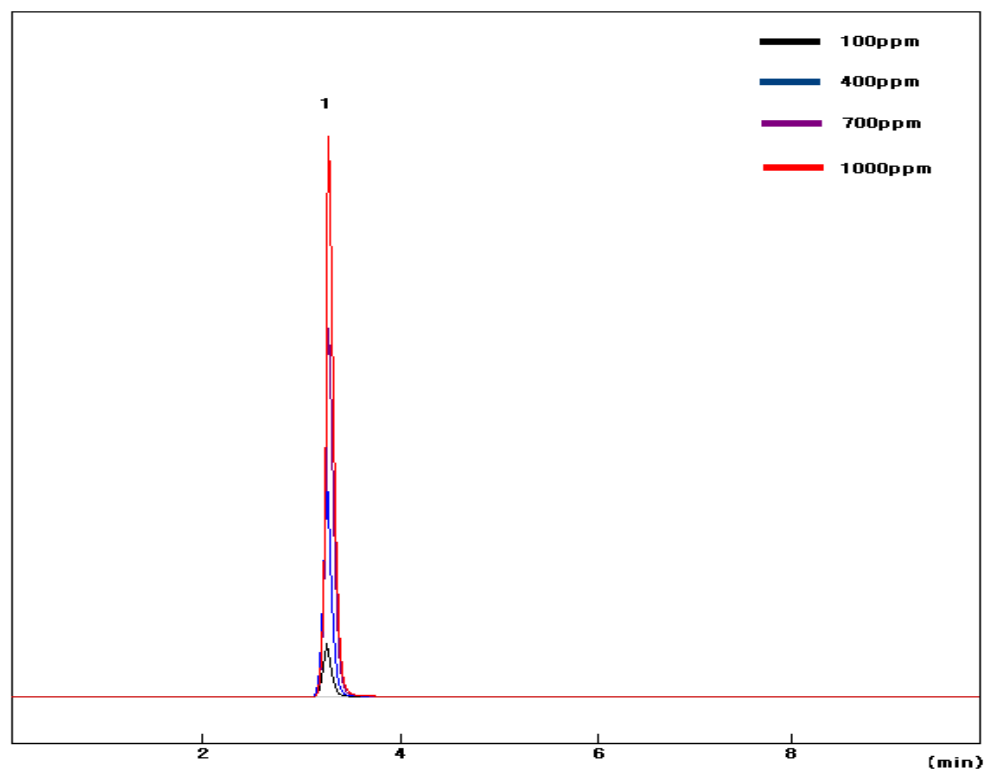
Column Oven : 30°C

Detector : UV/Vis 280nm

Column : C18 (4.6*250mm, 5um)

Injection Volumn : 20ul sample loop

2. Chromatogram



1. Arbutin

