

# Vanillin Analysis (Comparing Waters SAX Column)

## 1. Analytical Condition

### YL9100 HPLC

Mobile Phase : ACN : pH=7 buffer(10mM Na<sub>2</sub>HPO<sub>4</sub>+10mM NaH<sub>2</sub>PO<sub>4</sub>)  
= 17 : 83 (add 0.1% phosphoric acid)

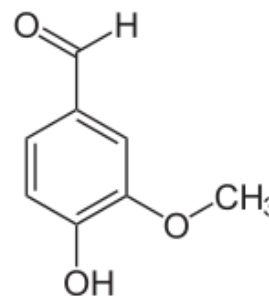
Flow Rate : 1.0ml/min

Column Oven : 40°C

Detector : UV/Vis 254nm

Injection Volume : 20ul

Column : Waters SAX column C18 (4.6\*150mm, 5um)



## 2. Chromatogram

