

D-Panthenol Analysis in Raw materials for Cosmetics

1. Analytical Condition

YL 9100 Series HPLC

Mobile Phase : [Triethylamine 5ml + H₃PO₄ 3ml]/water1L

Flow Rate : 0.4ml/min

Column Oven : 40°C

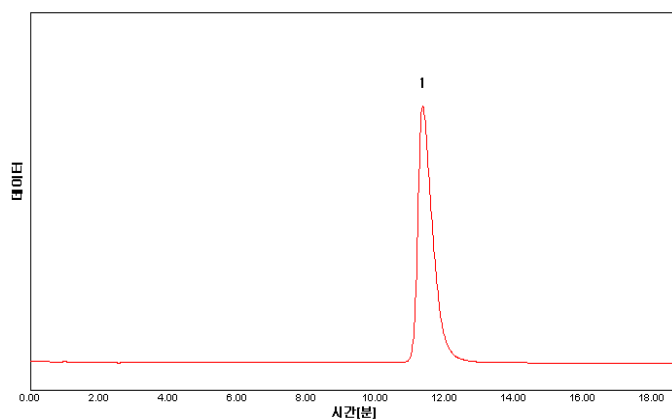
Detector : UV/Vis Detector-200nm

Column : Capcell pak UG C18 (2.0*150mm, 5um)

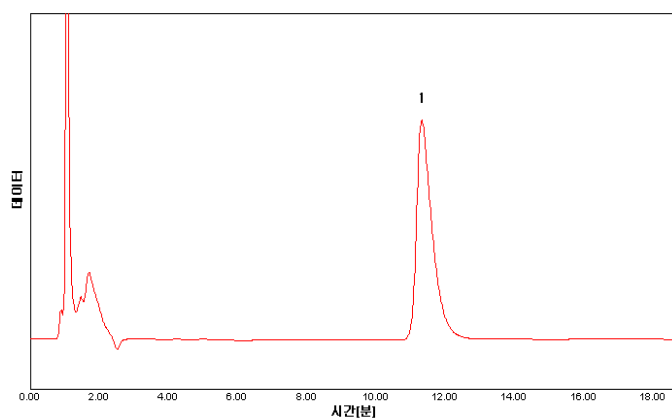
Injection Volumn : 5ul

2. Chromatogram

Standard



Sample



1. D-panthenol