

Flocoumafen Analytical in Rat poison

1. Analytical Condition

YL9100 HPLC

Mobile Phase : A : Water((0.1% TFA)

B : MeOH(0.1% TFA)

Flow Rate : 1.4ml/min

Column Oven : 45°C

Detector : UV/Vis 308nm

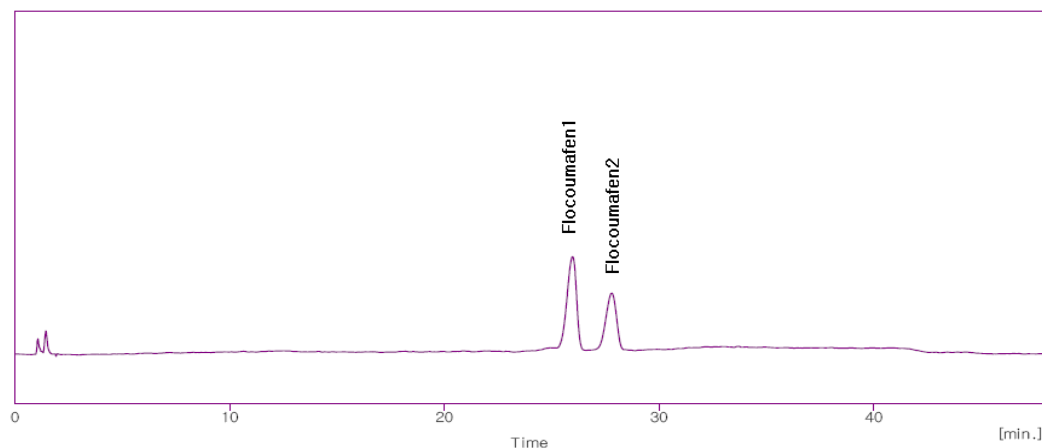
Column : phenyl (4.6*150mm, 5um)

Injection Volume : 40ul

Gradient Program	A	B
Initial	70	30
10.00	30	70
15.00	30	70
20.00	25	75
30.00	5	95
39.00	5	95
42.00	70	30

2. Chromatogram

Std sample



Sample

