

Formic acid Analysis

1. Analytical Condition

YL 9100 Series HPLC

Mobile Phase : Water (0.15% H₃PO₄)

Flow Rate : 1.0ml/min

Column Oven : 30°C

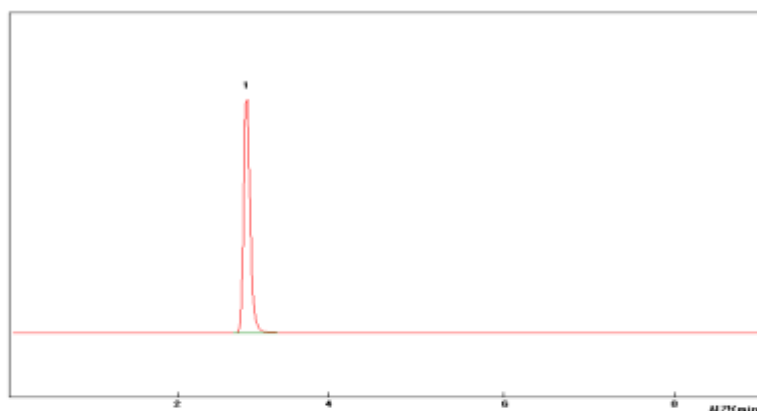
Detector : UV/Vis 210nm

Column : SB-Aq (4.6*250mm, 5µm)

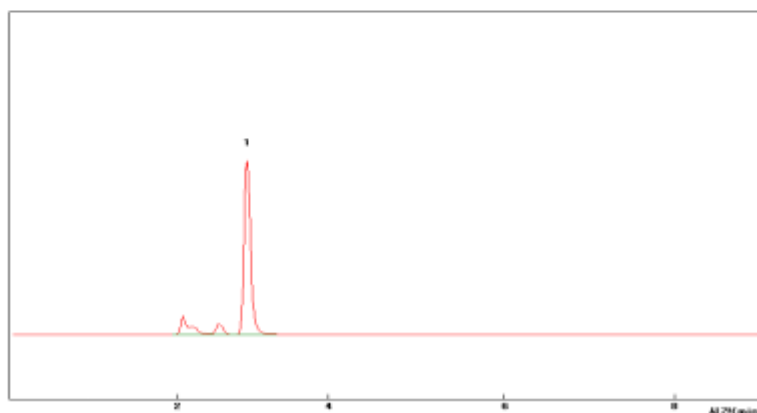
Injection Volume : 20µl sample loop

2. Chromatogram

Standard



Example



1. Formic acid

