



Phthalate 5 Mix (HPLC_PDA)

1. Analytical Condition

YL9100 HPLC System

Mobile Phase : Gradient (A = UPW, B = Acetonitrile)

Flow rate : 1 mL/min

Column : Agilent eclipse XDB C8 (4.6 * 150 mm, 5 μ m)

Detector : UV/Vis, 230 nm

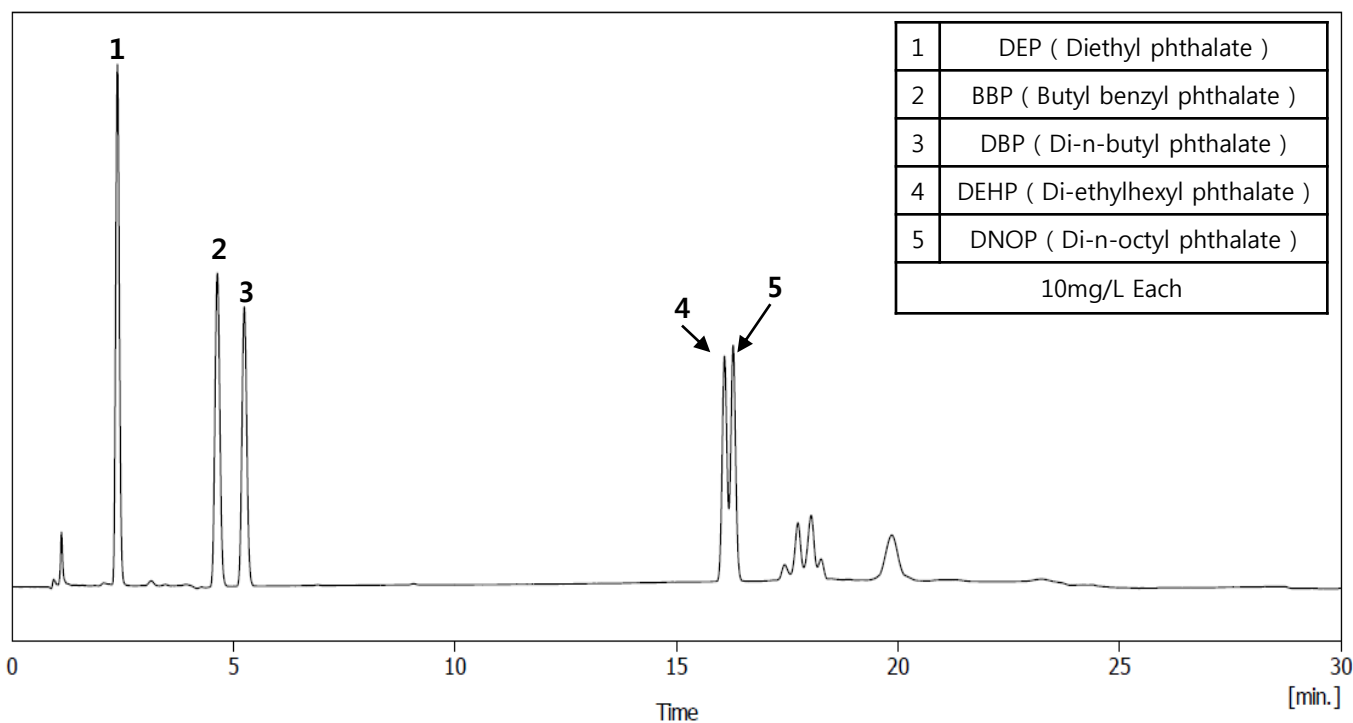
Column Temp. : 35 $^{\circ}$ C

Injection volumn: 20 μ L

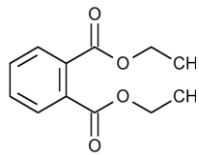
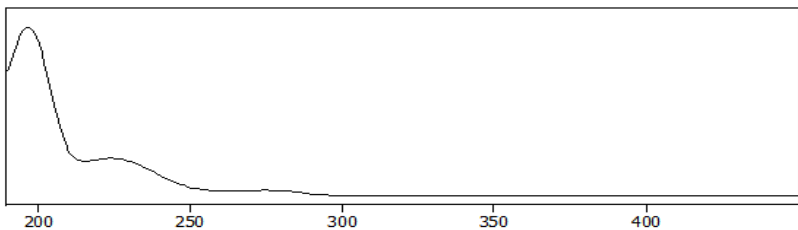
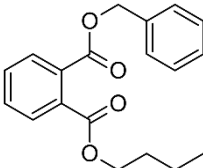
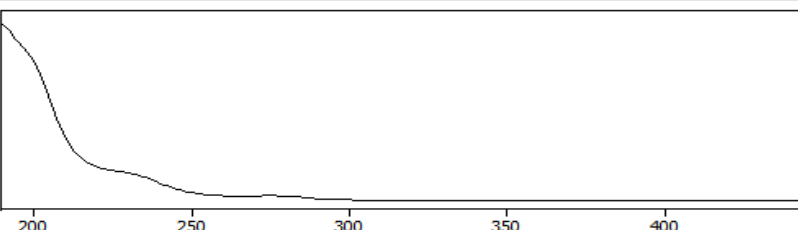
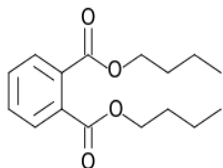
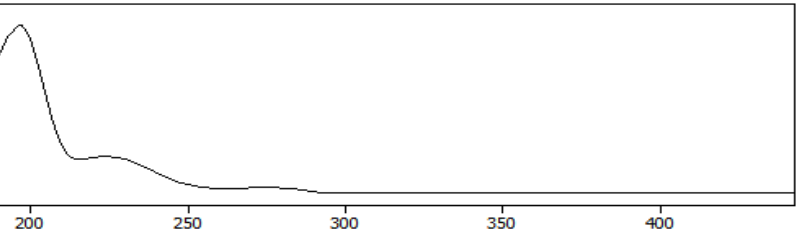
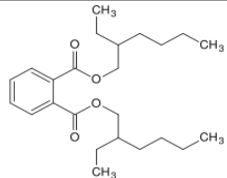
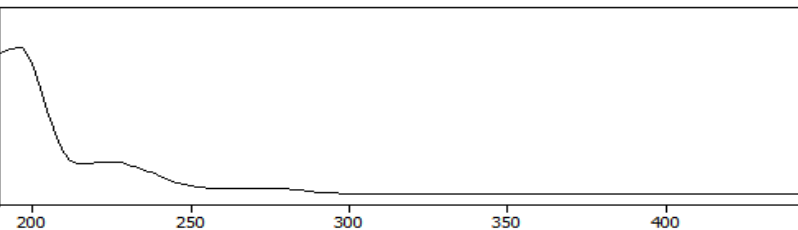
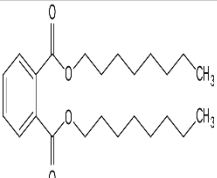
<Gradient Program>

Time(min)	A (%)	B (%)
Initial	30	70
15	5	95
20	5	95
22	30	70
30	30	70

2. Chromatogram



3. PDA Spectrum

	Abb.	Structure	UV spectra
1	DEP	 Diethyl phthalate	
2	BBP	 Butyl benzyl phthalate	
3	DBP	 Di-n-butyl phthalate	
4	DEHP	 Di-ethylhexyl phthalate	
5	DNOP	 Di-n-octyl phthalate	