

GPC (Gel Permeation Chromatograph)

YL GPC system is to provide easy and convenient solution to analyze various natural compounds or synthetic compounds. The standard that is the most similar to the molecular structure of sample has to be chosen, and then dissolve the sample in soluble solvent such as THF, DMF or Alkaline solutions.

Depending on the solution in which the standard and sample were dissolved, choose the GPC columns and analyze the relative molecular weight and the distribution of molecular weight. YL GPC System increases the analysis efficiency with providing the mostly common standards and proper columns by the sample.

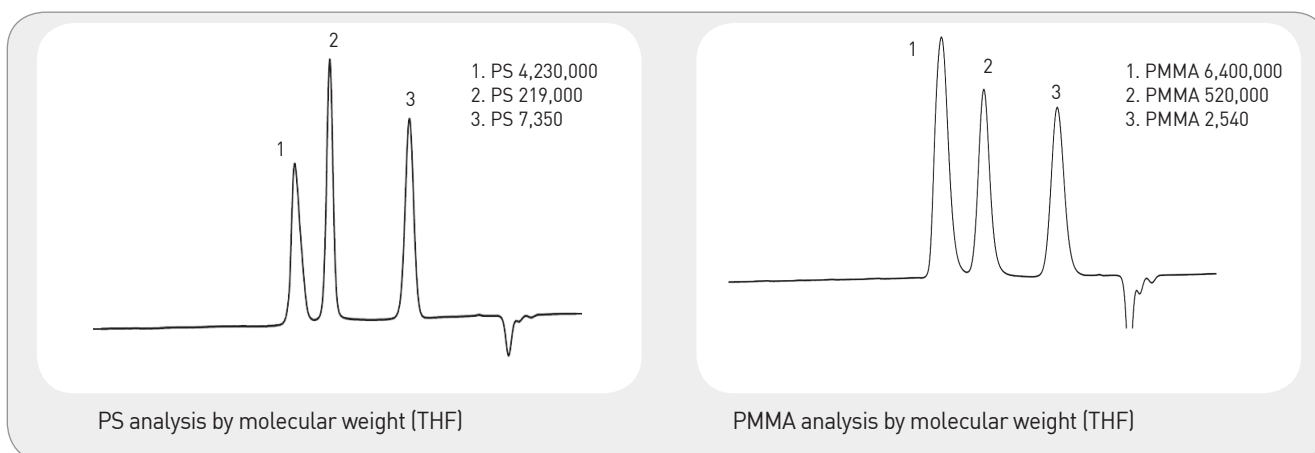
• Useful Information

Columns and standards of polymers are categorized depending on the solvents. It is recommended to use 2 columns to be connected for the polymer analysis to get an accurate result.

		Water-soluble	Fat-soluble
Column	W	Ultrahydrogel	Styragel
	S	OHpak	KD / KF
Standards		Polyethylene Glycol / Pullulan	Polystyrene / Polymethylmethacrylate

Columns and Standards for GPC

■ Fat-soluble standards (Polystyrene, Polymethylmethacrylate)



■ Water-soluble standards (Polyethylene Glycol)

