

Biotin, Vitamin B₇ Analysis

1. Analytical Condition

YL 9100 HPLC

Column : C18(4.6 X 150mm, 5 μ m)

Detector : UV/Vis 210nm

Injection Volume : 20ul

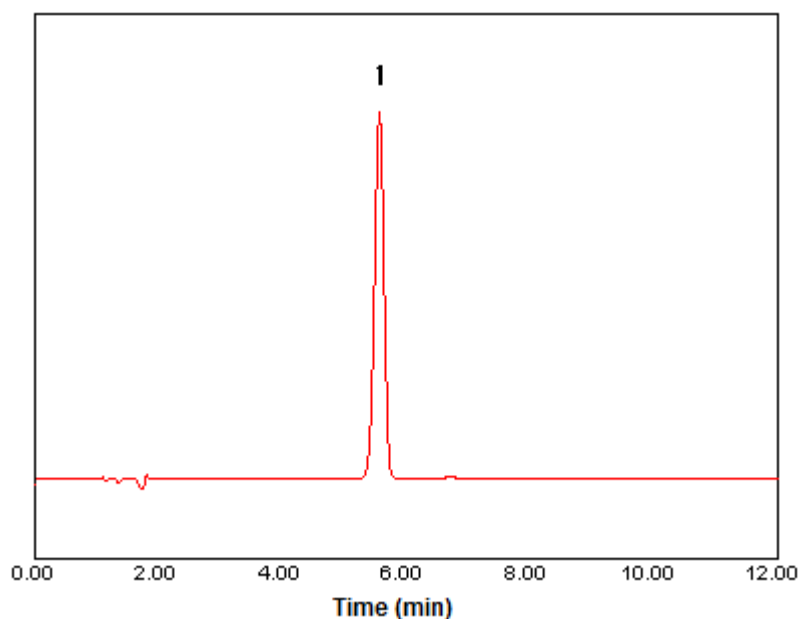
Mobile Phase :

[NaH₂PO₄ 7.8g + 1-Octane sulfonic acid.Na 0.18g+H₃PO₄ 3.4ml]/Water 1L=>(Solution 1)

Mobile phase for analysis (Solution 1) : ACN = 9 : 1

Flow Rate : 1.3ml/min

2. Chromatogram



1. Biotin

