

Fat Soluble Vitamins Analysis

1. Analytical Condition

YL 9100 HPLC

Mobile Phase : MeOH : Water = 95:5

Flow Rate : 1.0ml/min

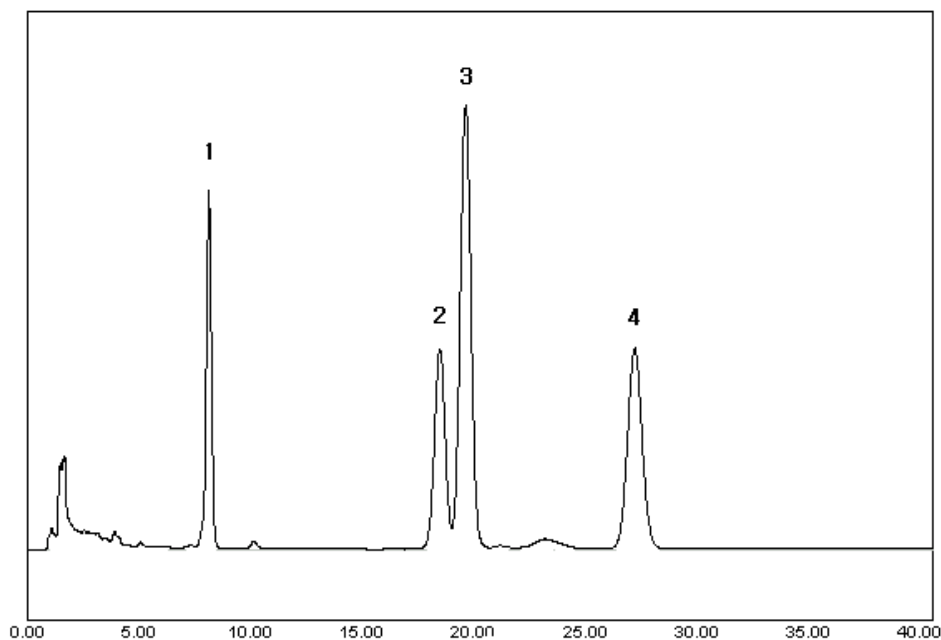
Column Oven : 35°C

Detector : UV/Vis 280nm

Column : C18 (4.6*150mm, 5um)

Injection Volumn : 20ul sample loop

2. Chromatogram



1. Retinol Acetate
2. Ergocalciferol
3. Cholecalciferol
4. α - Tocopherol

