

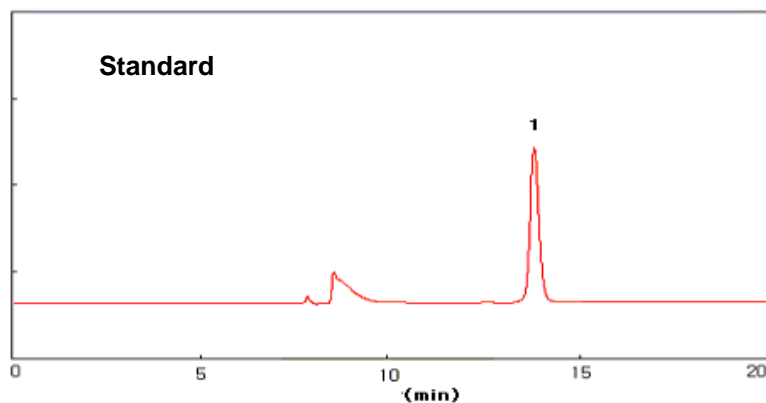
# Vitamin D<sub>3</sub> Analysis-Switching System in Soft Capsule

## 1. Analytical Condition

### YL 9100 HPLC

Column : column C8 for preconditioning, 4.6X150mm, 5 $\mu$ m  
Intermediate column for preconditioning C18, 2.0X35mm, 5 $\mu$ m  
column C18, 1.5X250mm, 5 $\mu$ m for analysis  
Detector : UV/Vis Wavelength : 269nm  
Mobile phase : for preconditioning mobile phase 70% Acetonitrile  
for Analysis mobile phase 100% Methanol  
Flow rate : for preconditioning 0.5ml/min, for analysis 0.1ml/min  
Switching time : 5.2 ~ 6.0min, Injection volumn : 100ul

## 2. Chromatogram



### 1. Vitamin D<sub>3</sub>

