

Water Soluble Vitamins Analysis

1. Analytical Condition

YL 9100 HPLC

Mobile Phase : A-Water(10mM NaH₂PO₄ + 10mM Na₂HPO₄ + Phosphoric acid 0.1%)

B-MeOH

*Gradient Program

Time (min)	Flow Rate (ml/min)	Mobile Phase	
		A(%)	B(%)
0	1.0	100	0
2	1.0	100	0
15	1.0	40	60
16	1.0	40	60

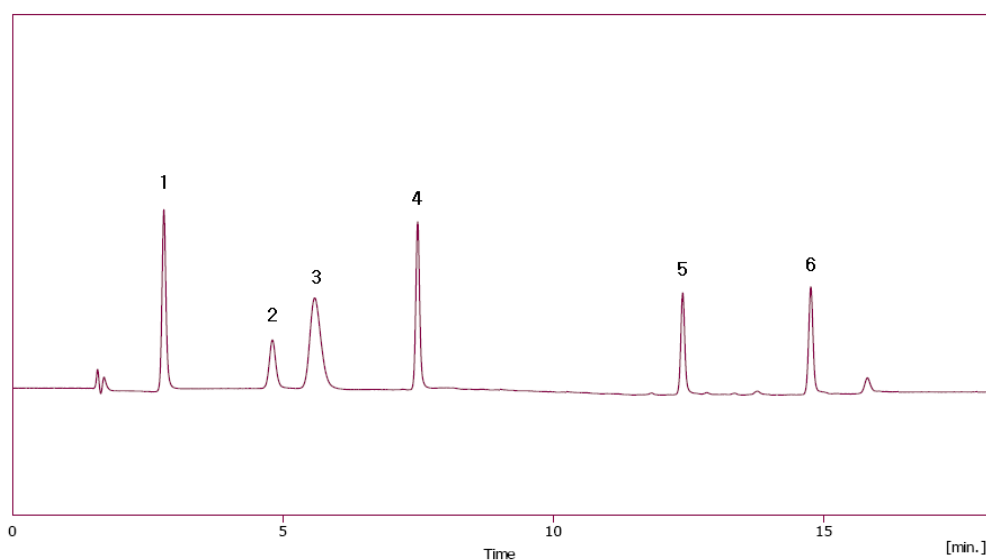
Column Oven : 35°C

Detector : UV/Vis 280nm

Column : Atlantis dC18 (4.6*150mm, 5µm)

Injection Volumn : 20ul sample loop

2. Chromatogram



1. Ascorbic acid
2. Nicotinic acid
3. Thiamin
4. Pyridoxine
5. Folic acid
6. Riboflavin

