

Arabinose, Xylose, Mannose, Galactose, Glucose Analysis

1. Analytical Condition

YL 9100 Series HPLC

Mobile Phase : ACN:Water=82:18(Isocratic mode)

Flow Rate : 1.2ml/min

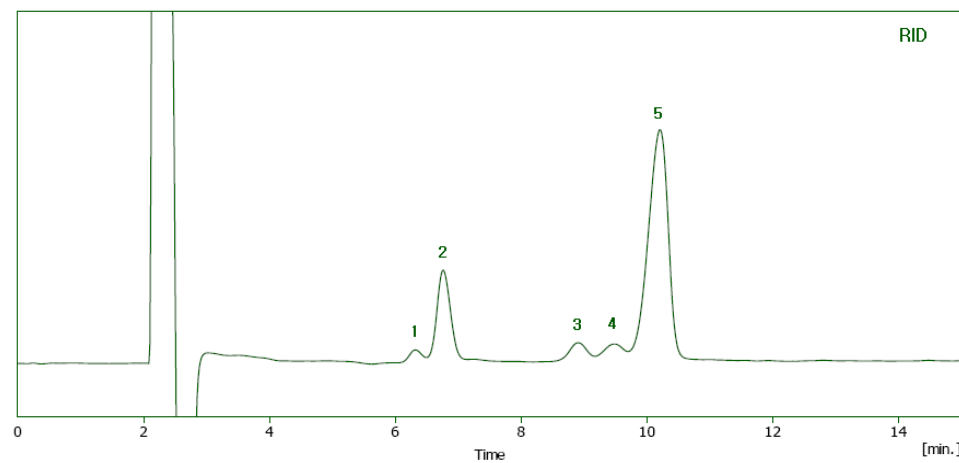
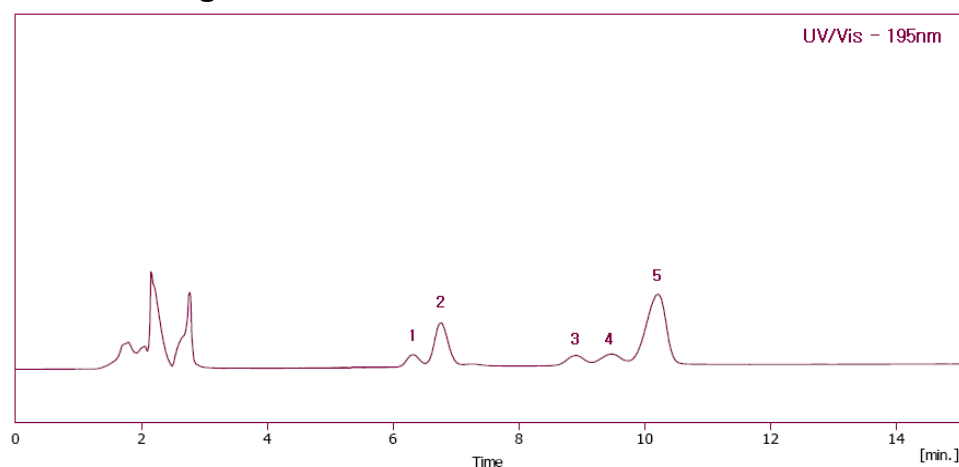
Column Oven : 40°C

Detector : UV/Vis - 195nm & RI

Column : Carbohydrate (4.6*250mm)

Injection Volumn : 20ul sample loop

2. Chromatogram



1. Arabinose
2. Xylose
3. Mannose
4. Galactose
5. Glucose

