

# General Sugars Analysis

## 1. Analytical Condition

### YL 9100 Series HPLC

Column : Styrene/DVB-Based strong cation-exchange resin(8\*300mm)

Detector : RI- Range 1, 45°C

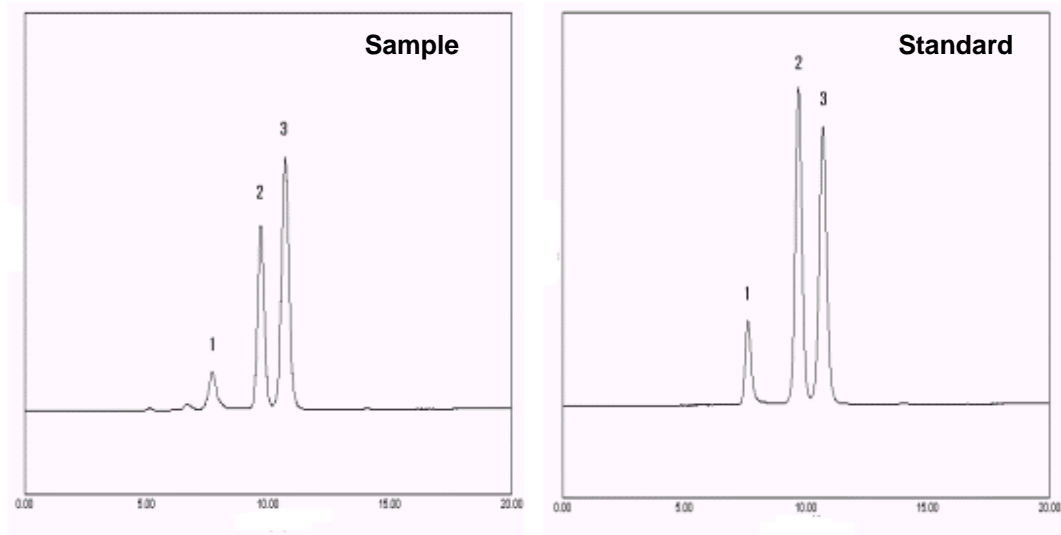
Injection Volume : 20 $\mu$ l

Mobile Phase : Water 100%

Flow Rate : 0.7ml/min

Oven Temperature : 75°C

## 2. Chromatogram



1. Sucrose    2. Glucose    3. Fructose

