

# Sugar Analysis In Honey

## 1. Analytical Condition

### YL 9100 Series HPLC

Mobile Phase : ACN:Water=75:25(Isocratic mode)

Flow Rate : 1.5ml/min

Column Oven : 35°C

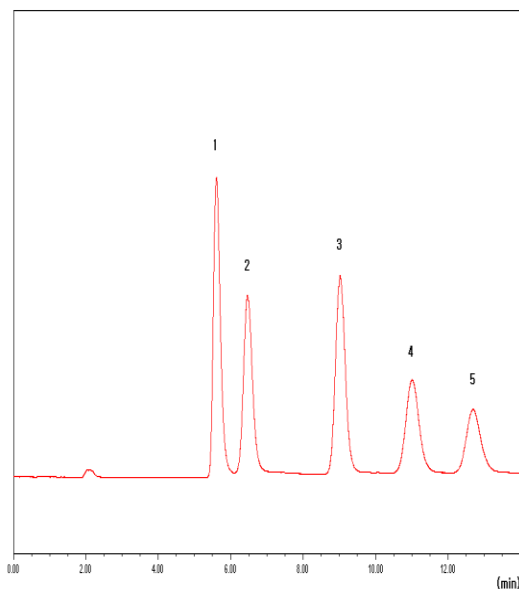
Detector : ELSD

Column : Carbohydrate (4.6\*250mm)

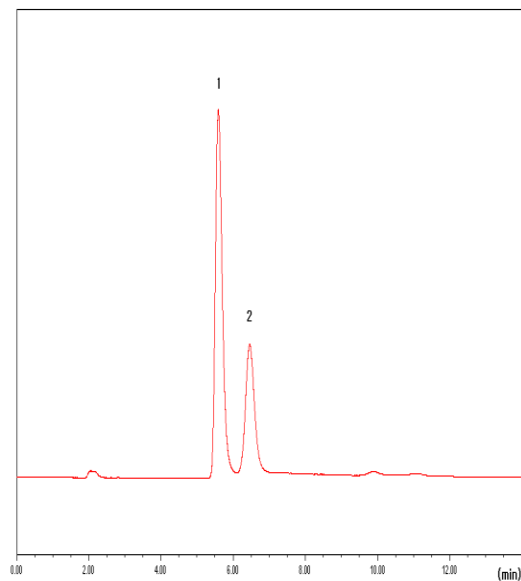
Injection Volumn : 20ul sample loop

## 2. Chromatogram

Standard



Sample



1. Fructose    2. Glucose    3. Sucrose    4. Maltose    5. Lactose

