

# Sugars Analysis In Molasses

## 1. Analytical Condition

### YL 9100 Series HPLC

Mobile Phase : ACN:Water=75:25 (Isocratic mode)

Flow Rate : 1.5ml/min

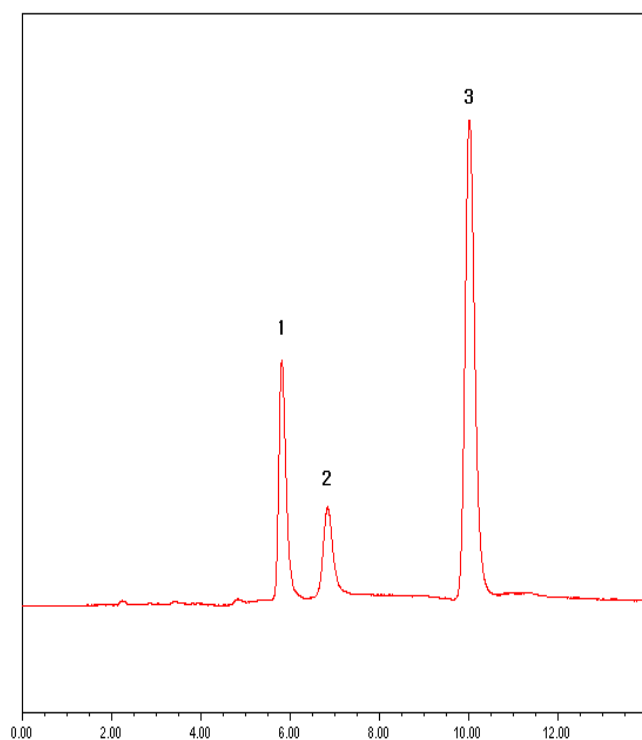
Column Oven : 35°C

Detector : ELSD – Range 1/2, gas 1.5L/min, Temp 55°C

Column : Carbohydrate (4.6\*250mm)

Injection Volumn : 20ul sample loop

## 2. Chromatogram



**1. Fructose**

**2. Glucose**

**3. Sucrose**

