

Chlorogenic Acid Analysis In Coffee

1. Analytical Condition

YL9100 HPLC

Mobile Phase : MeOH:Water=8:2 (add 0.1% H₃PO₄)

Flow Rate : 1.0ml/min

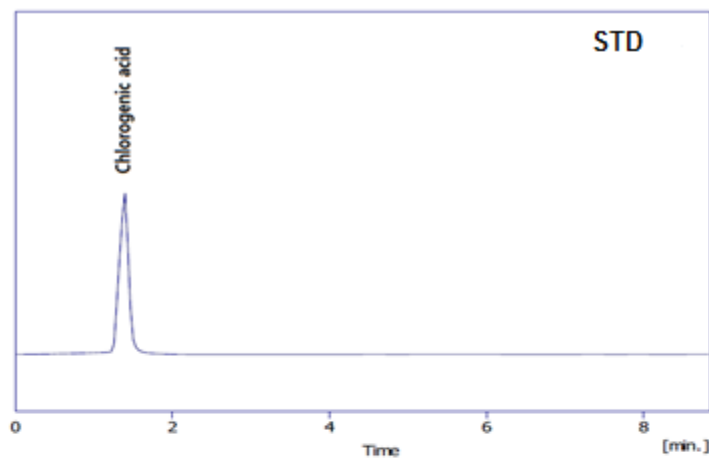
Column Oven : 40 °C

Detector : UV/Vis 330nm

Column : C18 (4.6*250mm, 5um)

Injection Volume : 20ul

2. Chromatogram



1. Chlorogenic acid

