

# Aflatoxins Analysis

## 1. Analytical Condition

### ***YL 9100 Series HPLC + Post Column Derivatization System***

#### **Analytical Conditions**

Column : C18(4.6\*250mm, 5um)

Temperature : 40°C

Flow Rate : 1.0 mL/min

Mobile phase : MeOH : CH<sub>3</sub>CN : H<sub>2</sub>O = 3 : 2 : 6 (Isocratic)

Detector : FLD Ex. 365nm, Em. 435nm

Injection Volume : 20 µL

#### **Post-column Conditions**

System : Pinnacle PCX with 0.5 mL reactor

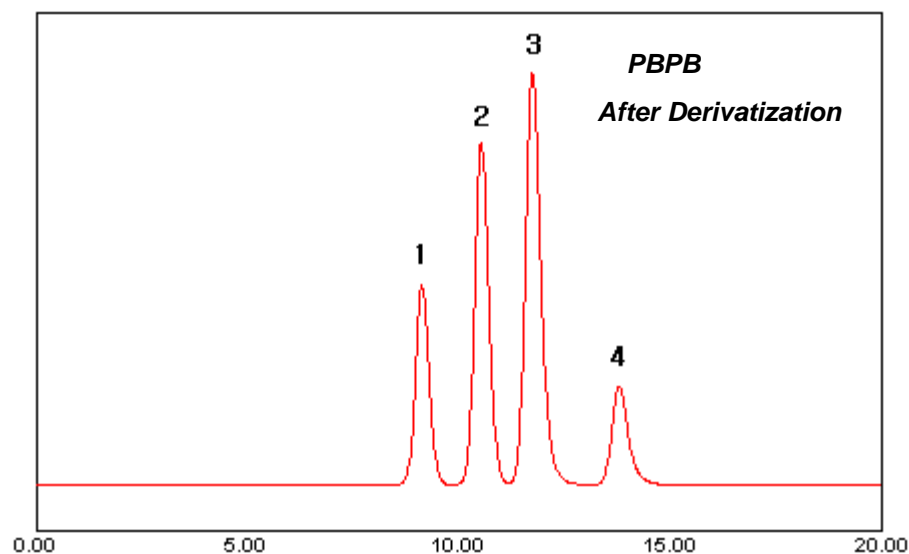
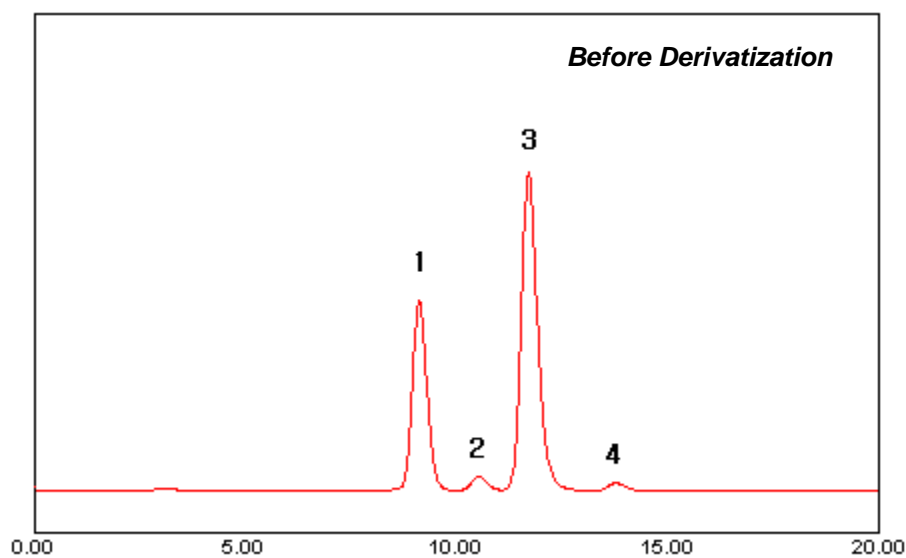
Reagent – PBPB Derivatization solution

Reactor condition - 40 °C, 0.4ml/min



## Aflatoxins Analysis

### 2. Chromatogram



1. G<sub>2</sub>
2. G<sub>1</sub>
3. B<sub>2</sub>
4. B<sub>1</sub>

