

# Amino Acid Analysis

## 1. Analytical Condition

### *YL 9100 Series HPLC + Post Column Derivatization System*

#### **Analytical Conditions**

Column : High efficiency Sodium Cation-exchange(4.0\*150mm)

Temperature : 42°C

Flow Rate : 0.4 mL/min

Mobile phase : 1700-0112 : Na740 : RG011(Gradient)

Detector : UVD 570nm

Injection Volume : 20 µL

#### **Post-column Conditions**

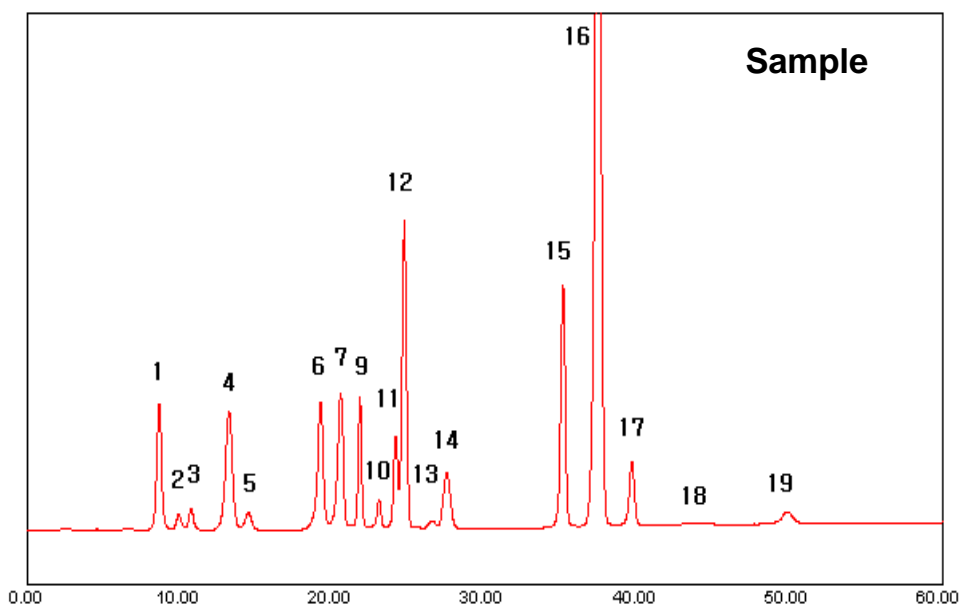
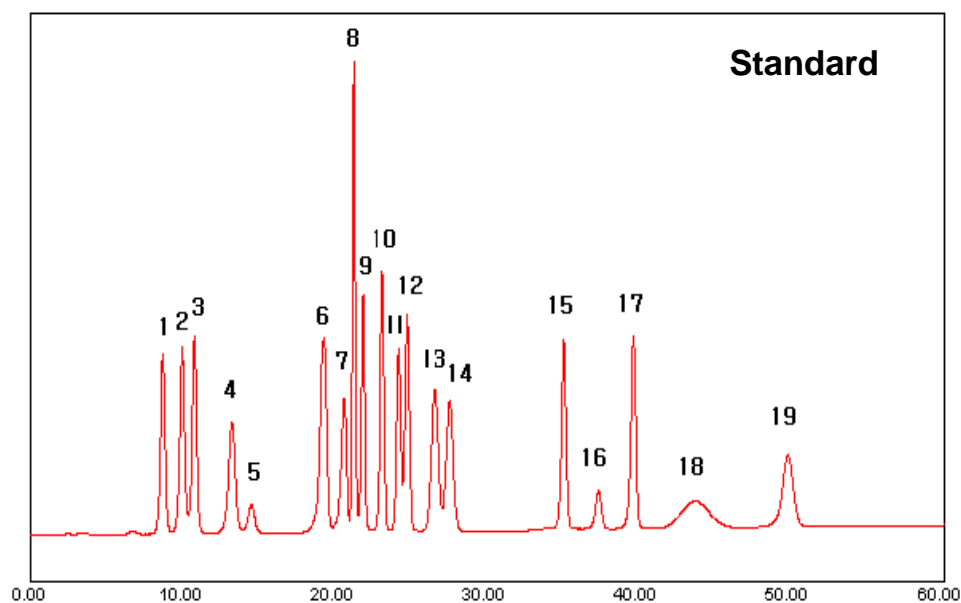
System : Pinnacle PCX with 0.5 mL reactor

Reagent – TRIONE derivatization solution

Reactor condition - 130 °C, 0.3ml/min

# Amino Acid Analysis

## 2. Chromatogram



1. Aspartic acid
2. Threonine
3. Serine
4. Glutamic acid
5. Proline
6. Glycine
7. Alanine
8. Cystine
9. Valine
10. Methionine
11. Isoleucine
12. Leucine
13. Tyrosine
14. Phenylalanine
15. Lysine
16. Ammonia
17. Histidine
18. Tryptophan
19. Arginine

