

Amino Acid Analysis by Pre-Column Derivatization

1. Analytical Condition

YL 9100 Series HPLC + YL9150 Autosampler

Analytical Conditions

Column : Sunfire C18, 4.6mm 150mm, 3.5um

Temperature : 45°C

Flow Rate : 1.0 mL/min

Mobile phase : A : 5.5g NaH₂PO₄+10N NaOH=pH7.8

B : ACN:MeOH:water(45:45:10), gradient

Detector : UVD 338nm(OPA), 262nm(FMOC)

Injection Volume : 10 µL

Autosampler mixing condition :

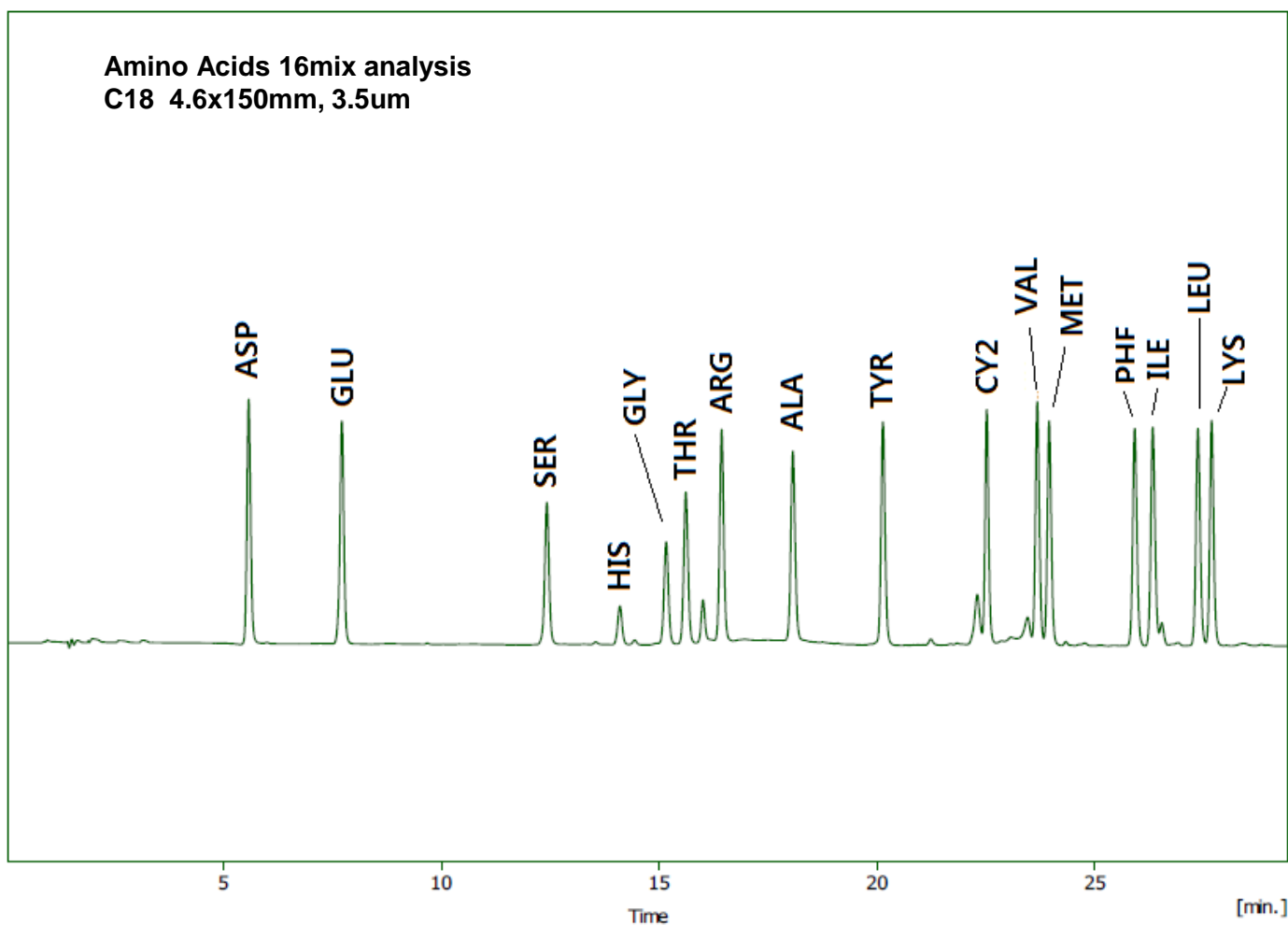
Use Mix Methods

#	Action Type	From	To	Amount [µl]
1	Add	Sample	Destination	25
2	Add	Reagent A	Destination	50
3	Mix	2		30
4	Add	Reagent B	Destination	30
5	Mix	2		40



Amino Acid Analysis by Pre-Column Derivatization

2. Chromatogram



- | | | | |
|------------------------|---------------------|------------------|---------------------|
| 1. Aspartic acid(ASP) | 2. Glutamate(GLU) | 3. Serine(SER) | 4. Histidine(HIS) |
| 5. Glycine(GLY) | 6. Threonine(THR) | 7. Arginine(ARG) | 8. Alanine(ALA) |
| 9. Tyrosine(TYR) | 10. Cystine(CY2) | 11. Valine(VAL) | 12. Methionine(MET) |
| 13. Phenylalanine(PHE) | 14. Isoleucine(ILE) | 15. Leucine(LEU) | 16. Lysine(LYS) |