

Amino Acid Analysis By Pre-column Derivatization

1. Analytical Condition

YL 9100 Series HPLC + YL9150 Autosampler

Analytical Conditions

Column : C18, 4.6mm 150mm, 5um

Temperature : 40°C

Flow Rate : 2.0 mL/min

Mobile phase : A : 40mM Na₂HPO₄ pH7.8, B : ACN:MeOH:water(45:45:10), gradient

Detector : UVD 338nm

Injection Volume : 20 µL

Autosampler mixing condition :

Sampler Method AS Status

Mode, Time and Temp. | Inputs and Outputs | **Mix Methods** | System Settings | Tray

Use Mix Methods

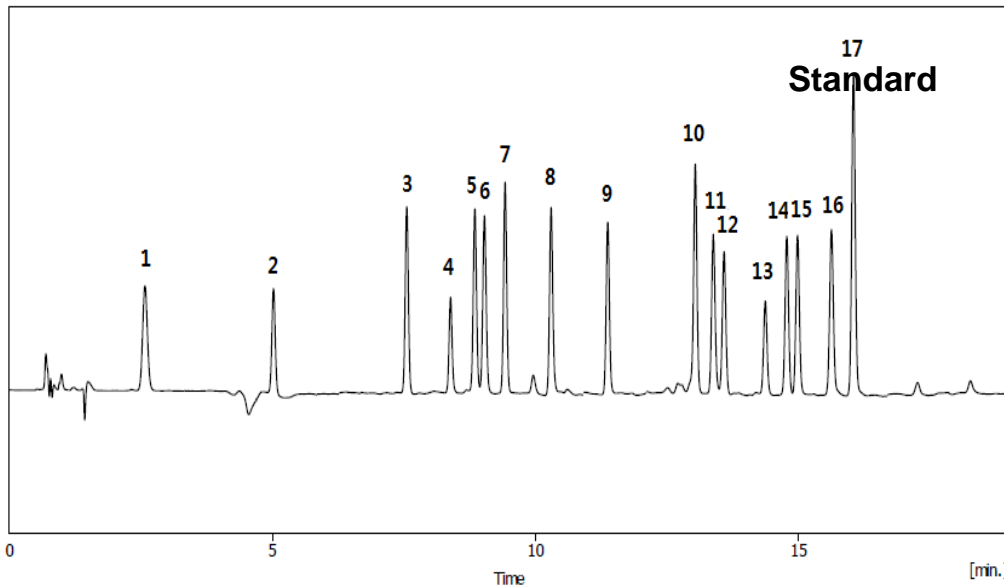
#	Action Type	From	To	Amount [µl]
1	Add	Sample	Destination	20
2	Add	Reagent A	Destination	30
3	Mix	3		35
4	Add	Reagent B	Destination	20
5	Mix	5		50



Amino Acid Analysis By Pre-column Derivatization

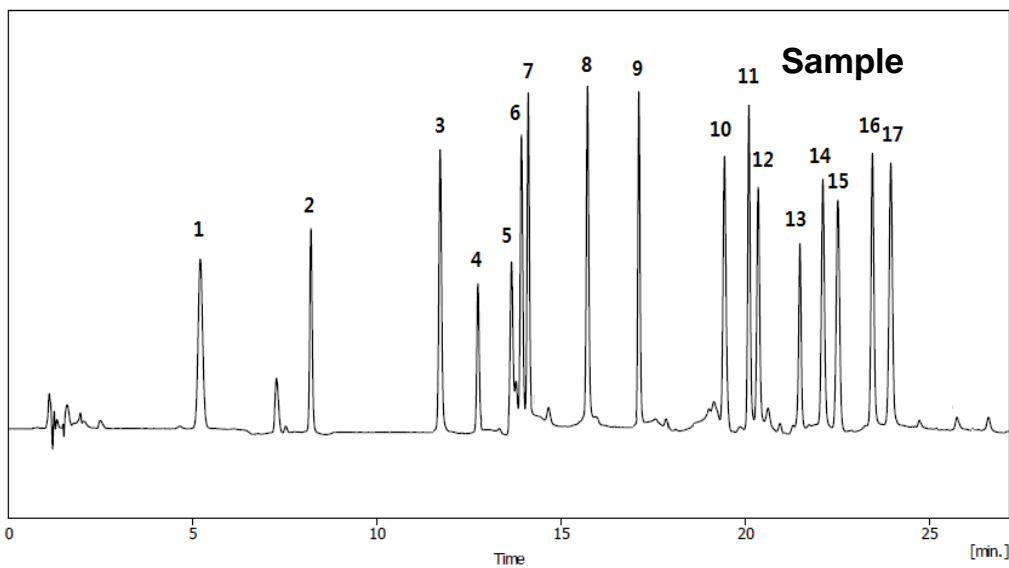
2. Chromatogram

Amino Acids 17mix analysis C18 4.6x150mm, 5um]



1. Aspartic acid
2. Glutamic acid
3. Serine
4. Histidine
5. Glycine
6. Threonine
7. Arginine
8. Alanine
9. Tyrosine
10. Cystine
11. valine
12. Methionine

Amino Acids 17mix analysis C18 4.6x150mm, 5um]



13. Tryptophane
14. Phenylalanine
15. Isoleucine
16. Leucine
17. Lysine

