

Class 2 Residual Solvent mix A (ICH)

1. Analytical Condition

YL 6900 GC/MSD System

YL6500 GC

Oven : 40 °C(10min) -> 10 °C/min -> 240 °C(10min)

Column : DB-624 (60 m * 0.25 mm * 1.4 μm)

Carrier gas : He, 1 mL/min (Split ratio 10:1)

Injector : Capillary 250 °C

Versa - Headspace

Loop Size : 1 mL

Headspace Oven Temp. : 80 °C

Transfer Line Temp. : 85 °C

Sample Equi. time : 60 min

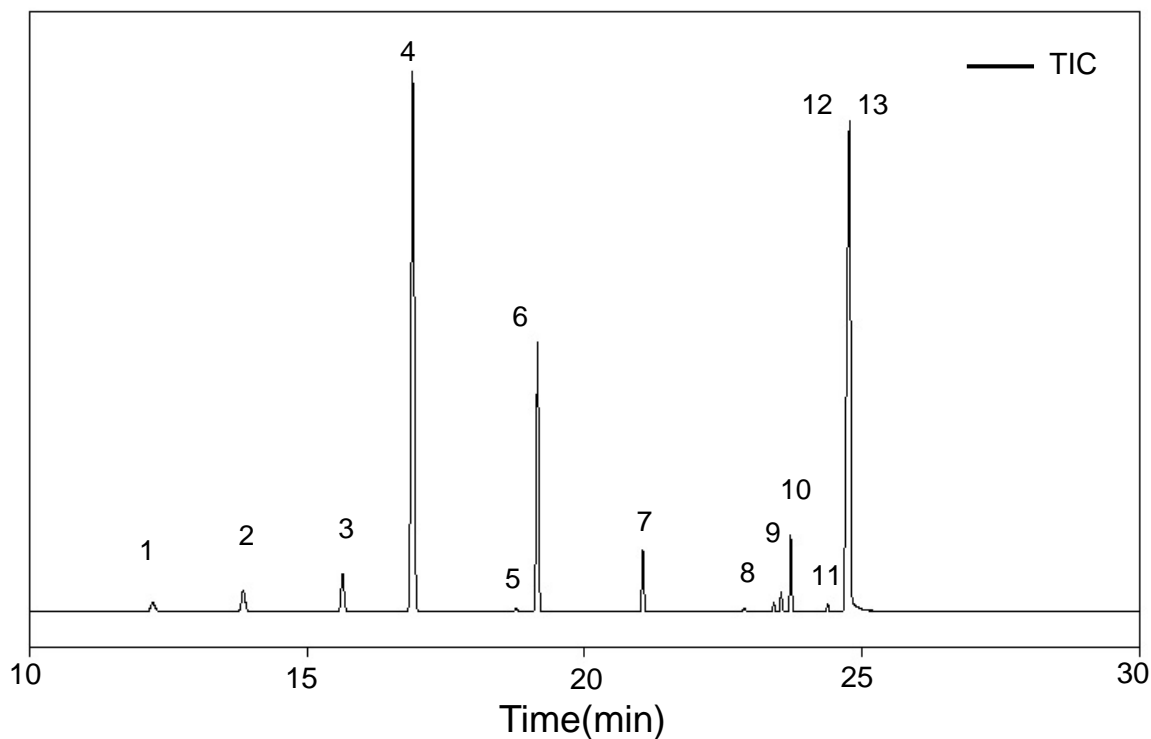
YL6900 MSD

Ion Source Temp. : 200 °C

Transfer Line Temp. : 240 °C

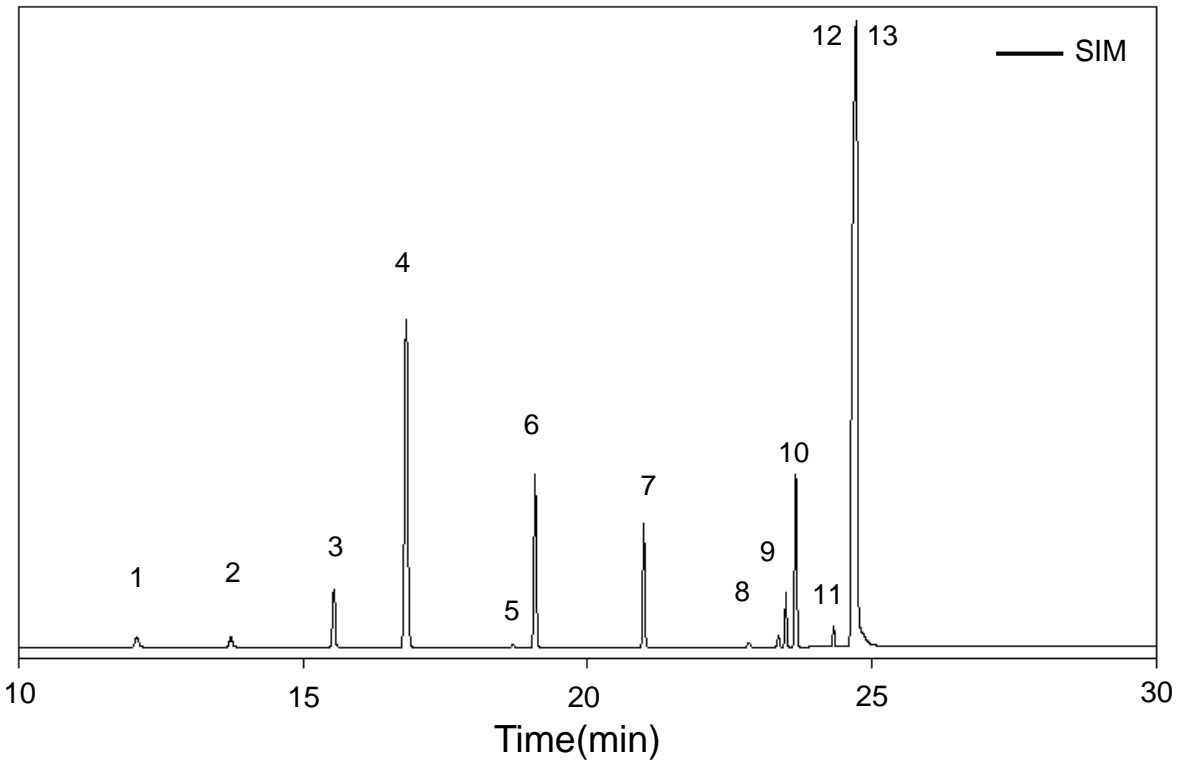
Scan Range : 10-350 amu

2. TIC (Scan mode)



1 Methylene chloride	4 Cyclohexane	7 Toluene	10 Ethylbenzene
2 <i>n</i> -Hexane	5 Trichloroethylene	8 N,N-Dimethylformamide	11 <i>m</i> -Xylene
3 <i>cis</i> -1,2-Dichloroethene	6 Methylcyclohexane	9 Chlorobenzene	12,13 <i>p</i> -Xylene, <i>o</i> -Xylene

3. TIC (SIM mode)



- | | | | |
|----------------------------------|---------------------|---------------------------------|--|
| 1 Methylene chloride | 4 Cyclohexane | 7 Toluene | 10 Ethylbenzene |
| 2 <i>n</i> -Hexane | 5 Trichloroethylene | 8 <i>N,N</i> -Dimethylformamide | 11 <i>m</i> -Xylene |
| 3 <i>cis</i> -1,2-Dichloroethene | 6 Methylcyclohexane | 9 Chlorobenzene | 12,13 <i>p</i> -Xylene, <i>o</i> -Xylene |

4. Spectra

