

BTEX(Benzene,Toluene,Ethylbenzene,Xylene) with TD

1. Analytical Condition

YL 6900 GC/MSD & TD(Thermal Desorbers) System

Oven : 40 °C(3min) -> 10 °C/min -> 150 °C(2min)

Column : DB-5MS (30 m * 0.25 mm * 0.25 μm)

Carrier gas : He, 0.8 mL/min (Split ratio 10:1)

- TD condition

Injection Volume to trap : 1 mL

Desorption Temp. : 300 °C

Desorption Time : 10 min

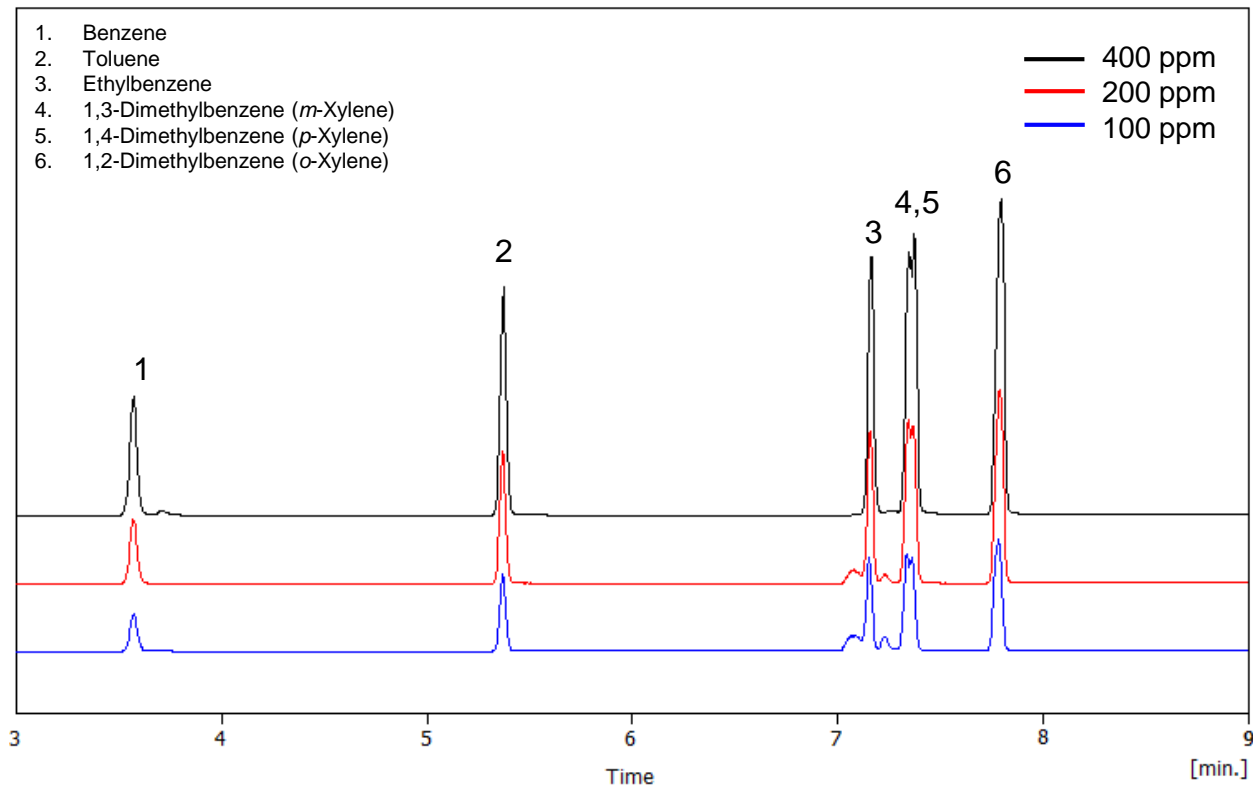
Detector : MSD (Scan mode)

Ion source Temp. : 230 °C

Transfer line Temp. : 280 °C

Start time 3 min

2. TIC (Scan Mode)



BTEX(Benzene,Toluene,Ethylbenzene,Xylene) with TD

3. Spectra

